

# OBSERVATION OF PROPAGATION CUTOFF AND ITS CONTROL IN THIN OPTICAL WAVEGUIDES

Cite as: Appl. Phys. Lett. **17**, 127 (1970); <https://doi.org/10.1063/1.1653333>  
Submitted: 08 June 1970 . Published Online: 21 October 2003

David Hall, Amnon Yariv, and Elsa Garmire



View Online



Export Citation

## ARTICLES YOU MAY BE INTERESTED IN

### OPTICAL SECOND HARMONIC GENERATION IN FORM OF COHERENT CERENKOV RADIATION FROM A THIN-FILM WAVEGUIDE

Applied Physics Letters **17**, 447 (1970); <https://doi.org/10.1063/1.1653265>

### DIGITAL ELECTRO-OPTIC GRATING DEFLECTOR AND MODULATOR

Applied Physics Letters **18**, 147 (1971); <https://doi.org/10.1063/1.1653603>

### Optical waveguide modulation using nematic liquid crystal

Applied Physics Letters **22**, 365 (1973); <https://doi.org/10.1063/1.1654675>

Lock-in Amplifiers

Zurich Instruments

MFLI

Watch the Video

by a factor of about 10 over a laminar flow and by about 50 over no flow (in this case). It is apparent therefore that a considerable improvement in heat transfer in a structure such as a superconducting solenoid can be obtained by the provision of cooling channels and by the establishment of appropriate flow conditions. The improvement can be so large as to reduce the need for stabilizing materials on the superconductor.

\*Supported in part by Atomic Energy of Canada, Ltd.

<sup>†</sup>Permanent address: Electrotechnical Institute of the Slovak Academy of Science, Bratislava, Czechoslovakia.

<sup>1</sup>M. N. Wilson, *Int. Inst. Refrig. Suppl.* **1**, 109 (1966).

<sup>2</sup>S. Lehongre, J. C. Boissin, C. Johannès, and A. De La Harpe, *Proceedings of the Second International Cryogenic Engineering Conference, Brighton, 1968* p. 274 (unpublished).

<sup>3</sup>H. Ogata, M. Kenmochi, S. Sato, and H. Kimura, *Cryogenic Eng. (Japan)* **5**, 219 (1969).

## OBSERVATION OF PROPAGATION CUTOFF AND ITS CONTROL IN THIN OPTICAL WAVEGUIDES\*

David Hall, Amnon Yariv, and Elsa Garmire

*Division of Engineering and Applied Science, California Institute of Technology, Pasadena, California 91109*

(Received 8 June 1970; in final form 15 June 1970)

The first observation of optical cutoff in thin-film waveguides is reported. The waveguides consist of thin ( $\sim 10\mu$ ) epitaxial layers of high-resistivity GaAs deposited on lower-resistivity GaAs substrates. The optical cutoff is controlled through the electro-optic effect by applying an electric field across the epitaxial layer.

Guiding and electro-optic modulation of light in thin epitaxial semiconductor films has recently been demonstrated.<sup>1</sup> In this paper we report the first observation and control of optical cutoff in such waveguides.

The optical waveguide consists of a GaAs high-resistivity epitaxial layer ( $\sim 12\mu$ ) sandwiched between a metal film and lower-resistivity GaAs substrate as shown in Fig. 1. The existence of confined modes is due to a discontinuity  $\Delta n$  of the index of refraction at the epitaxial layer-substrate interface.<sup>1</sup>

The theory describing the propagation of modes in this structure can be adapted from that of the symmetric dielectric waveguide.<sup>2</sup> The symmetric guide can support, in general, two types of modes: *TE* waves where  $\vec{E}$  is parallel to  $y$ , and *TM* waves in which  $\vec{E}$  is parallel to  $x$ . The existence of a conducting plane (metal film) at  $x=0$ , however, limits the *TE* and *TM* modes in our case, to those possessing odd symmetry about  $x=0$ . These can be written as

$$E_y(TE) \propto \sin(hx) \exp(-i\beta z), \quad (1)$$

$$H_y(TM) \propto \sin(hx) \exp(-i\beta z), \quad |x| < t$$

$$E_y(TE) \propto \exp[-p(x-t) - i\beta z], \quad (2)$$

$$H_y(TM) \propto \exp[-p(x-t) - i\beta z], \quad |x| > t.$$

The lowest-order  $TE_1$  and  $TM_1$  (the numerical subscript gives the number of zero crossings in

the interval  $|x| < t$ ) modes can exist only if the condition

$$(2n_0 \Delta n)(2\pi t/\lambda_0)^2 > (\pi/2)^2 \quad (3)$$

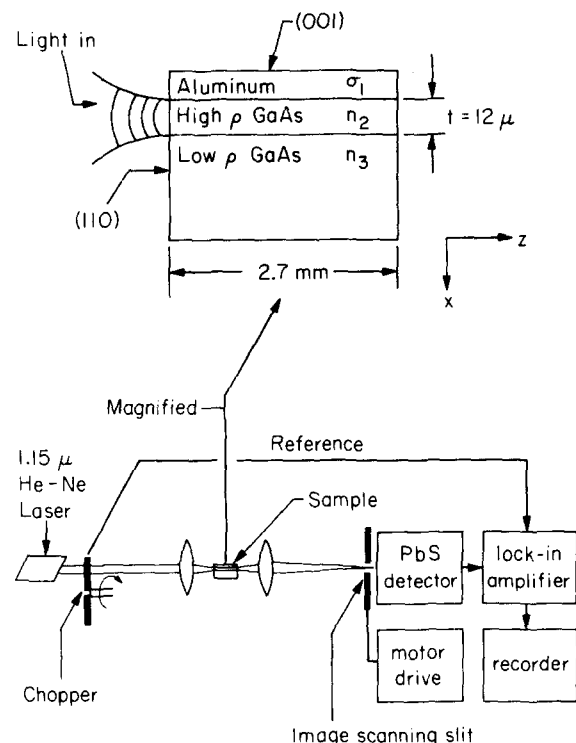
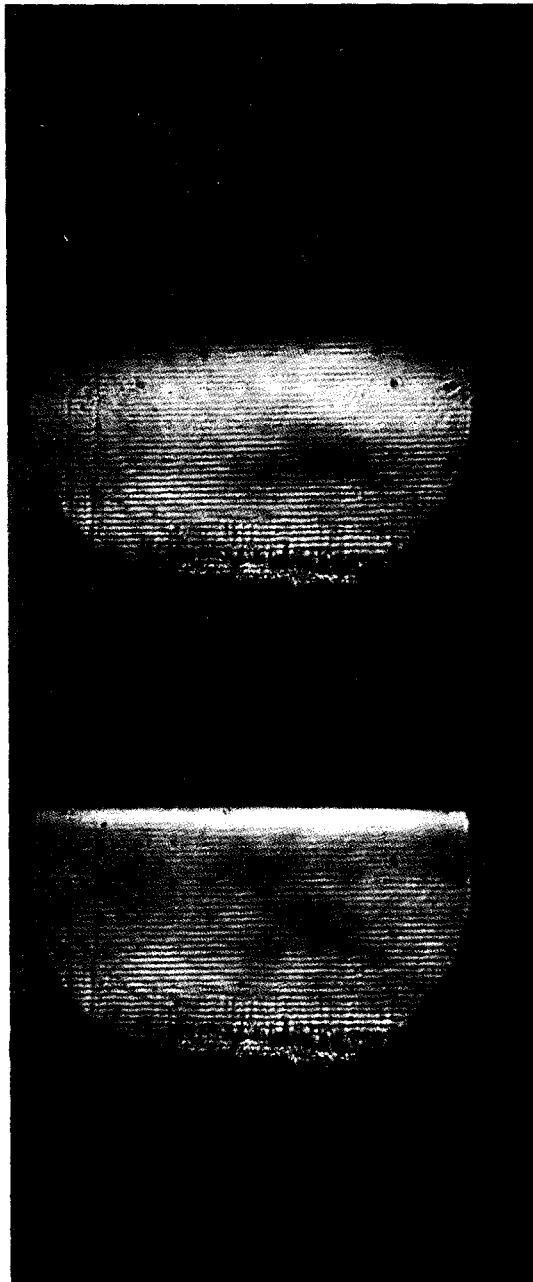
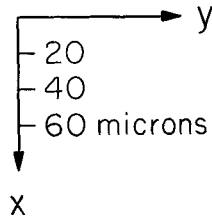


FIG. 1. The experimental setup.



(a)



(b)

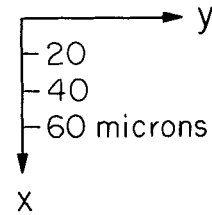


FIG. 2. (a) The intensity distribution in the output face of the waveguide in the cutoff condition with no applied field. The fringes are due to interference between the incident light and that reflected from the metal film. (b) The intensity distribution with the field applied. The upper bright stripe corresponds to the confined  $TE_1$  mode. The direction of the displacement of the fringes relative to their position in (a) is used to determine the sign of  $\Delta n$ .

is satisfied. When the sign of the inequality in (3) is reversed, the field intensity increases with  $x$  so that confined propagation does not exist. This condition is referred to as cutoff.

The index discontinuity  $\Delta n$  at the interface  $x=t$  is due, in our experiment, to two mechanisms. The first is the dependence of the index on the doping level. This discontinuity, which we denote as  $\Delta n_{\text{chemical}}$ , is known to lead to mode confinement in  $p$ - $n$  junctions.<sup>3,4</sup> In our guide  $\Delta N \approx 2 \times 10^{16} \text{ cm}^{-3}$  and we estimate  $\Delta n_{\text{chemical}} \sim 10^{-4}$ . The second contribution is due to the linear electro-optic effect in GaAs and is proportional to the reverse bias

$V$  applied to the metal-semiconductor junction. For the crystal orientation shown in Fig. 1 the electro-optic contribution to the index of a wave polarized along  $y$  is

$$\Delta n = n_0^3 r_{41} E_x / 2,$$

and is zero for waves polarized along  $x$ .<sup>5</sup> We can consequently, write condition (3) for confined propagation as

$$\Delta n_{\text{chemical}} + \frac{n_0^3 r_{41} V}{2t} > \frac{1}{32n_0} \left( \frac{\lambda_0}{t} \right)^2, \tag{4}$$

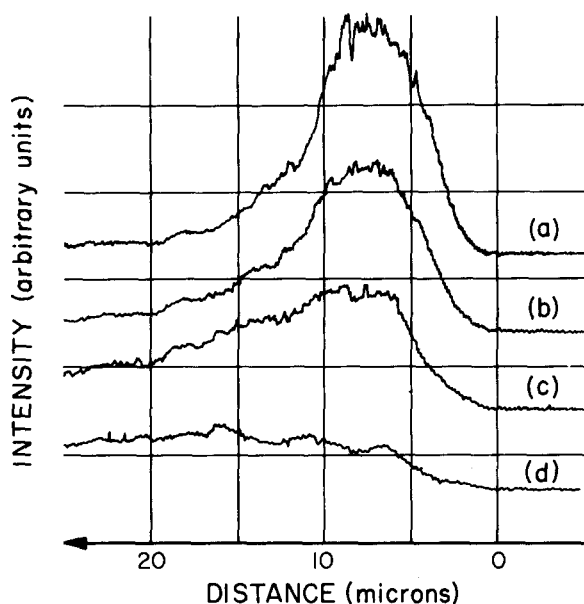


FIG. 3. The intensity distribution of the  $TE_1$  mode measured with applied voltages of (a) 130, (b) 100, (c) 70, and (d) 0 V.

for the  $TE$  mode and as

$$\Delta n_{\text{chemical}} > (1/32n_0)(\lambda_0/t)^2, \quad (5)$$

in the case of the  $TM$  wave.  $\gamma_{41}$  is the electro-optic coefficient of GaAs and the applied voltage is  $V = E_x t$ .

The doping level of the substrate ( $N \sim 2 \times 10^{16} \text{ cm}^{-3}$ ) and the thickness  $t = 12 \mu$  were chosen in our experiment so that at  $\lambda_0 = 1.15 \mu$  condition (5) was not fulfilled and no confined modes can exist. The application of a voltage  $V$  increases  $\Delta n$  by adding, as indicated in (4), an electro-optic contribution making it possible for a confined  $TE$  wave to exist. A magnified image of the output face of the crystal with and without an applied bias ( $V = 130 \text{ V}$ ) is shown in Fig. 2. The existence of a confined mode with the voltage on is clearly evident. In addition, we made the following observations: (1) When the

optical polarization is rotated by  $90^\circ$  ( $\vec{E} \parallel x$ ) so as to excite a  $TM$  wave, no confined mode exists with or without an applied field. This is consistent with the fact that there is no electro-optic contribution to  $\Delta n$  in the case of the  $TM$  wave. (2) By changing the crystal orientation we can reverse the sign (see caption under Fig. 2) of the electro-optic contribution to  $\Delta n$  as "seen" by the  $TE$  mode from (+) to (-). When this is done the application of a voltage does not lead to a confined mode in agreement with (4).

The gradual onset of confinement with increasing voltage is shown by the intensity profile plots in Fig. 3. The dependence of the guided intensity on the applied voltage can be used for modulation purposes.

In summary: The phenomena of propagation cut-off in thin optical waveguides is demonstrated. A continuous electro-optic control of the cutoff condition is used to demonstrate its effect on the intensity distribution of the dominant  $TE$  mode.

The authors wish to thank A. Shuskus and W. Oshinsky of United Aircraft Research Laboratories in East Hartford, Conn. for supplying the GaAs samples.

---

\*Research supported by the Office of Naval Research and by the Advanced Research Projects Agency through the Army Research Office, Durham, N. C.

<sup>1</sup>D. Hall, A. Yariv, and E. Garmire, *Opt. Commun.* May 1970 (to be published).

<sup>2</sup>See, for example, R. E. Collin *Field Theory of Guided Waves* (McGraw-Hill Book Co., New York, 1960).

<sup>3</sup>A. Yariv and R. C. C. Leite, *Appl. Phys. Letters* **2**, 55 (1963). Also W. L. Bond, B. G. Cohen, R. C. C. Leite, and A. Yariv, *ibid* **2**, 57 (1963).

<sup>4</sup>D. F. Nelson and F. K. Reinhart, *Appl. Phys. Letters* **5**, 148 (1964).

<sup>5</sup>S. Namba, *J. Opt. Soc. Am.* **51**, 76 (1961).